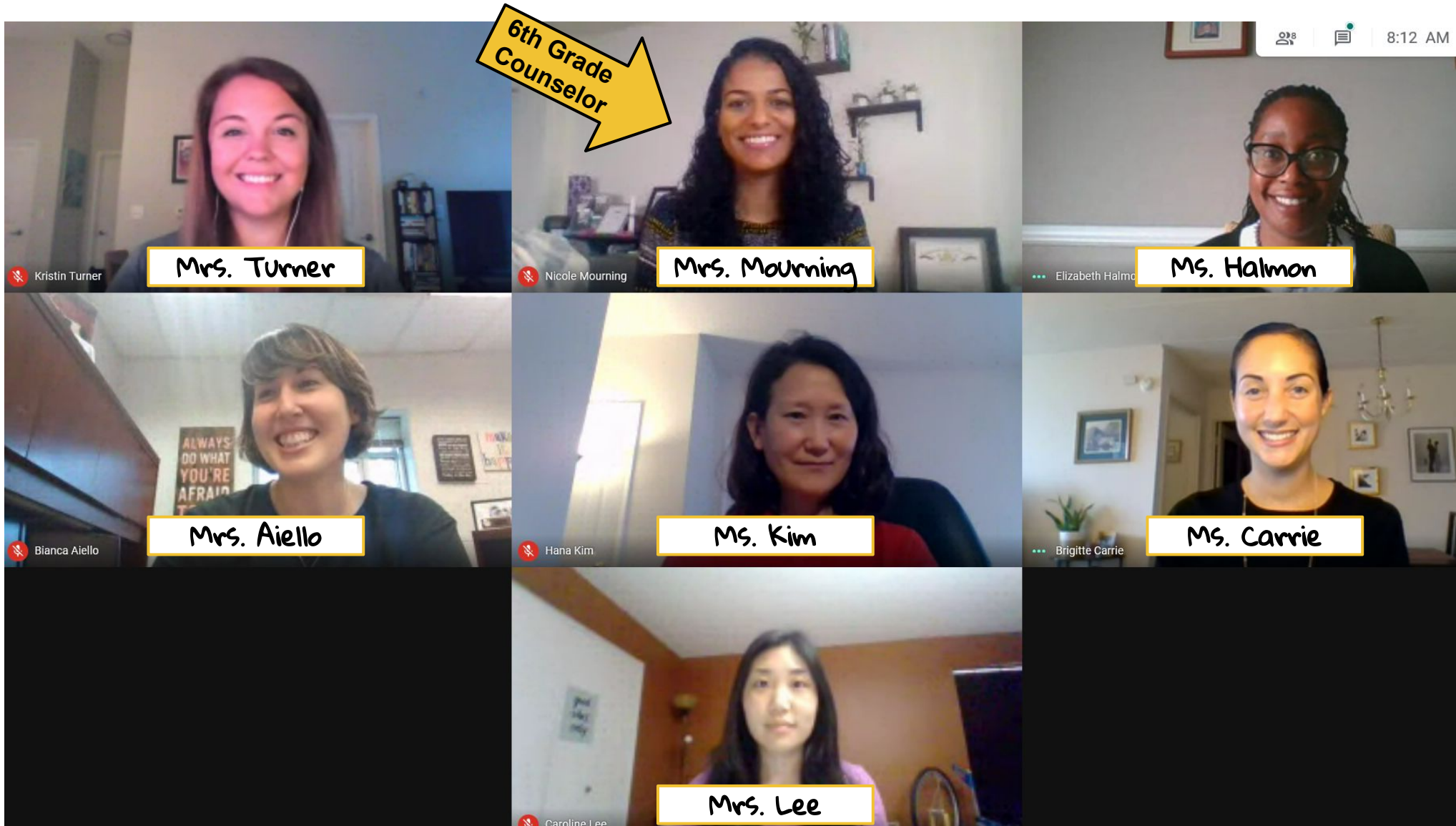


Current 5th Grade Course Selection Tutorial



[Click here to view a video recording of this lesson](#)

Poe Middle School Student Services



Lesson Overview

We are starting our process for helping you to choose your classes for next school year!

Today, we will learn about...

- core class options
- elective class options
- next steps to complete your course selection



IB/MYP Program Video



[Click here for Video](#)

Selecting Core Classes

Question: What are the 5 classes that all students are required to take?

Math

Language Arts

Social Studies

Science

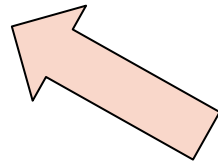
Health & P.E.

Core Class Choices

For most subjects, you will be able to choose between the on-level and Honors version of the class.

Example:

- English 6
- English 6 HN

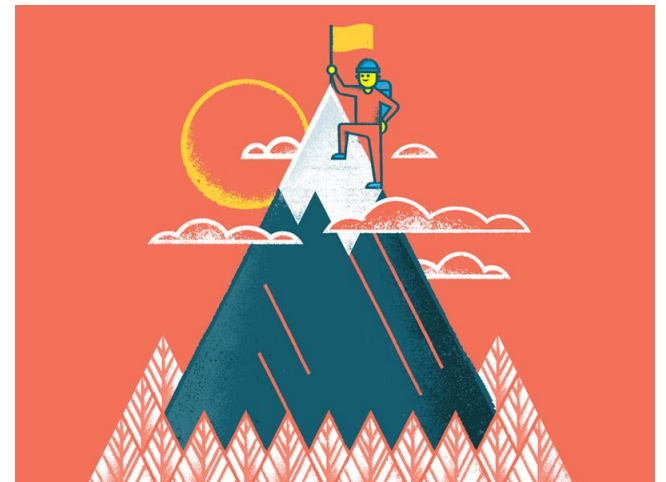


Notice that
HN means
Honors!



Choosing Between On-Level & Honors

- On-Level classes prepare students to meet grade level standards, be successful in high school and fulfill graduation requirements.
- All students are encouraged to challenge themselves by taking an honors level class at some point in their educational career.
- Let's look at a chart to help you decide whether you are ready to take an honors level course.



Honors Classes

Rigorous, fast paced curriculum and instruction

Increased focus on **depth** and **complexity** in specific subjects

Students enroll based on their **strengths, interests** and **potential**

Focuses on developing **self-advocacy skills**
(raising your hand, asking questions, attending tutoring, ect)

Focuses on developing student **independence** and **responsibility**

Selecting Elective Classes

Electives Options

- ▶ 2 year-long electives
- ▶ 1 year-long and 2 half-year electives
- ▶ 4 half-year electives

Semester 1
Semester 2

Option 1	
Year Long Elective	Year Long Elective

Option 2	
Year Long Elective	Half-year elective
	Half-year elective

Option 3	
Half-year Elective	Half-year Elective
Half-year Elective	Half-year Elective

Choosing Electives

- ▶ Pick electives that you are interested in.
- ▶ Don't be afraid to try something new!
- ▶ We will try our best to get you your first choice electives, however it is important that you let us know what backups you are interested in.
- ▶ In the course selection Google form, you will rank elective choices in order of preference. **You will enter your 1st choice for electives first, your 2nd choice next, and so on until you have entered 8 choices.**

Example:

1.	Band
2.	Theatre Arts Appreciation
3.	Musical Theatre Appreciation
4.	Art Foundations
5.	Chorus
6.	Family & Consumer Sciences or FACS 1
7.	Family & Consumer Sciences or FACS 2
8.	Coding & Innovative Technology

Year-Long Music Electives (Band, Chorus & Orchestra)



[Click here for Video](#)

Course Information: **MUSIC**

- ▶ ALL STUDENTS who plan to take **band, chorus or orchestra** next year will select the **BEGINNER** level on the course selection Google form, regardless of your current level.
- ▶ Music teachers will do assessments in the spring to determine placement for next year. Ms. Mourning, 6th grade counselor at Poe MS, will move students into the correct level at the end of the year.

Year-Long World Language Electives (Spanish & French)



[Click here for Video](#)

Course Information: WORLD LANGUAGE

Classes available to 6th Grade Students:

- Intro to Spanish
- Intro to French

Half-Year/Semester CTE Electives (FACS, STEM & Computer Technology)



[Click here for Video](#)

Course Information: CTE

Classes available to 6th Grade Students:

- Intro to Engineering
- Computer Explorations
- Intro to FACS

Half-Year/Semester Fine Arts Electives (Theatre & Art)



[Click here for Video](#)

Course Information: **FINE ARTS**

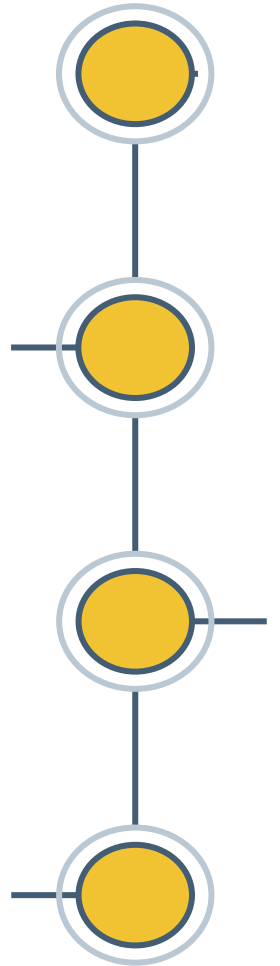
Classes available to 6th Grade Students:

- Art 6
- Theatre Arts Appreciation
- Musical Theatre Appreciation

Next Steps

Next Steps:

- Either your teacher or your counselor will help you fill out the Poe Middle School course selection Google form.
- All course selections are due by **February 26**
- If you need to make any changes to your selections after February 26th, you can email your Poe 6th grade counselor, Ms. Mourning at ndmourning@fcps.edu.
- A draft of your schedule will be mailed home to you in May



Course Selection Resources on Poe MS Website

How to access course selection resources:

→ Go to www.poems.fcps.edu

→ Click on “FULL MENU” on the top left of the screen

→ Click on the arrow next to “Student Services”

→ Click on “Course Selection & Academic Advising”

