

Current 6th & 7th Grade Course Selection Tutorial



Lesson Overview

We are starting our process for helping you to choose your classes for next school year!

Today, we will learn...

- this year's course selection process and timeline
- core class options
- elective class options
- next steps to complete your course selection



Academic Advising & Course Selection Process

Step 1:

Academic
Advising Lesson
Part 1
(February 5)

Learn about the academic advising process, timeline for course selection this year, and core and elective course options.



Step 2:

Complete
independently
(February 6-8)

Explore the online course catalog to pick the courses you want to take next year. Discuss your choices with your parent/guardian.



Step 3:

Academic
Advising Lesson
Part 2
(February 8-12)

Complete your course selection Google form and enter your course requests in SIS StudentVUE.



Step 4:

Complete
independently
(February 13-
March 5)

Email or show your parent/guardian the copy of your course selection Google form responses. All changes due to your counselor by March 5th.

Academic Advising Timeline

Date	Academic Advising Activity	Location
February 5	Academic Advising Lesson Part 1	Advisory Classes
February 8-12	Academic Advising Lesson Part 2	History Classes
February 16-26	Optional Individual Academic Advising	Health & PE Classes
March 5	Final changes to course selections DUE <i>Contact your counselor to make any changes</i>	N/A
March 12	All courses requests locked in SIS StudentVUE	N/A
May 2021	Draft schedules will be mailed home	N/A

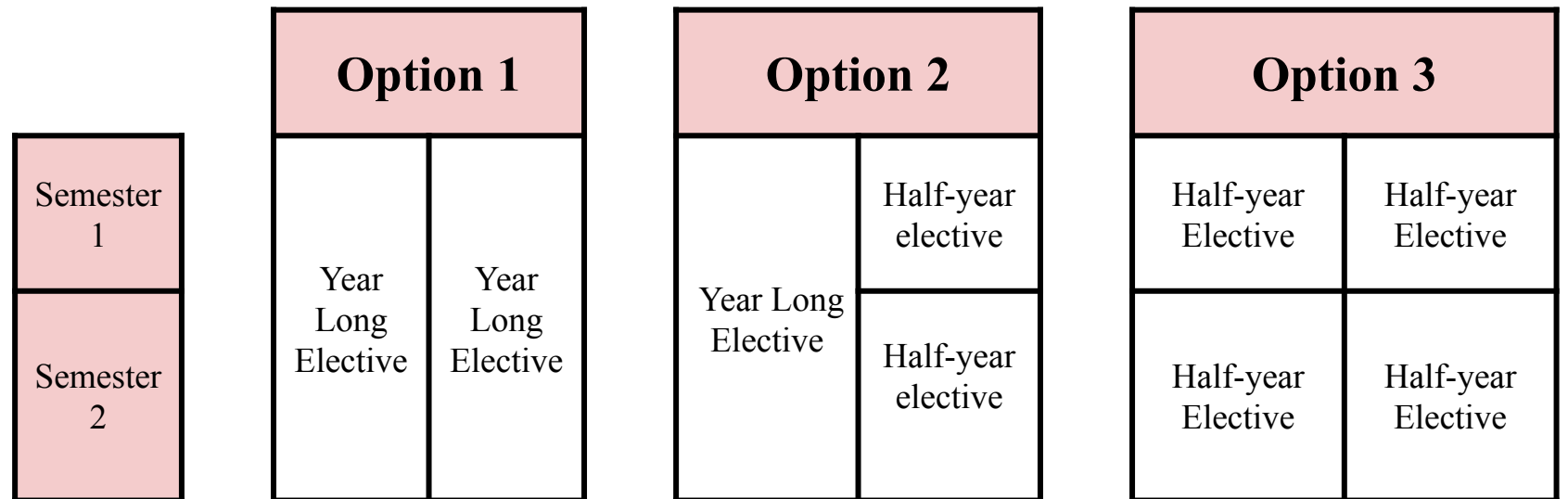
Schedule Overview

5 required classes:

- English
- History/Civics
- Science
- Math
- Health & PE

2 Periods of Electives:

- 2 year-long electives
or
- 1 year-long and 2 half-year electives
or
- 4 half-year electives



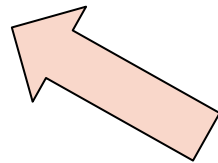
Selecting Core Classes

Core Class Choices

For most subjects, you will be able to choose between the on-level and Honors version of the class.

Example:

- English 8
- English 8 HN

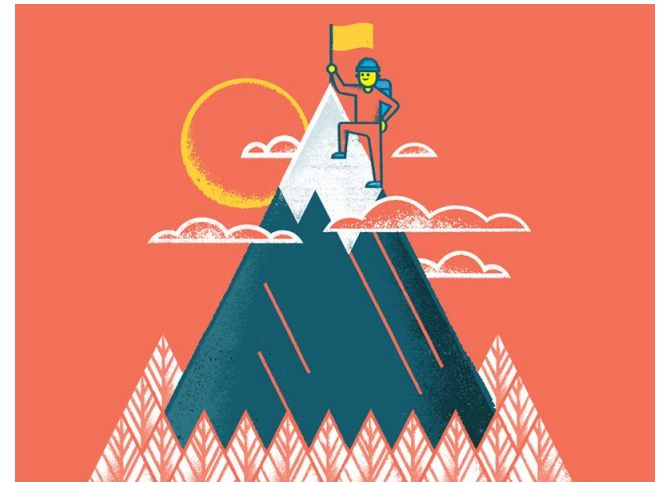


Notice that
HN means
Honors!



Choosing Between On-Level & Honors

- On-Level classes prepare students to meet grade level standards, be successful in high school and fulfill graduation requirements.
- All students are encouraged to challenge themselves by taking an honors level class at some point in their educational career.
- Let's look at a chart to help you decide whether you are ready to take an honors level course.



Honors Classes

Rigorous, fast paced curriculum and instruction

Increased focus on **depth** and **complexity** in specific subjects

Students enroll based on their **strengths**, **interests** and **potential**

Focuses on developing **self-advocacy skills**
(raising your hand, asking questions, attending tutoring, ect)

Focuses on developing student **independence** and **responsibility**

Course Information: **MATH**

Current 6th Graders:

- Math 7
- Math 7 HONORS
- Algebra HONORS:
 - To take this course, **you must...**
 - ✓ be in Math 6 Advanced currently
 - ✓ pass the IOWA assessment with a score in the 91 percentile or higher
 - ✓ pass the SOL with a score of 500 or higher
 - **Select “Math 7 HONORS”** on your Course Selection Google Form, and your counselor will change it to Algebra HONORS if you qualify



Course Information: **MATH**

Current 7th Graders:

- Pre-Algebra
- Algebra 1
- Algebra HONORS
- Geometry HONORS:
 - To take this course, **you must** be in Algebra 1 or Algebra HONORS currently
 - **Select “Algebra HONORS”** on your Course Selection Google Form, and your counselor will change it to Geometry HONORS if you qualify



Selecting Elective Classes

Electives Options

- ▶ 2 year-long electives
- ▶ 1 year-long and 2 half-year electives
- ▶ 4 half-year electives

Semester 1
Semester 2

Option 1	
Year Long Elective	Year Long Elective

Option 2	
Year Long Elective	Half-year elective
	Half-year elective

Option 3	
Half-year Elective	Half-year Elective
Half-year Elective	Half-year Elective

Choosing Electives

- ▶ Pick electives that you are interested in.
- ▶ Don't be afraid to try something new!
- ▶ We will try our best to get you your first choice electives, however it is important that you let us know what backups you are interested in.
- ▶ In the course selection Google form, you will rank elective choices in order of preference. **You will enter your 1st choice for electives first, your 2nd choice next, and so on until you have entered 8 choices.**

Example:

1.	Band
2.	Theatre Arts Appreciation
3.	Musical Theatre Appreciation
4.	Art Foundations
5.	Chorus
6.	Family & Consumer Sciences or FACS 1
7.	Family & Consumer Sciences or FACS 2
8.	Coding & Innovative Technology

Year-Long Music Electives (Band, Chorus & Orchestra)



[Click here for Video](#)

Course Information: **MUSIC**

- ▶ **ALL STUDENTS** who plan to take **band, chorus or orchestra** next year will select the **BEGINNER** level on the course selection Google form, regardless of your current level.
- ▶ Music teachers will do assessments in the spring to determine placement for next year. Counselors will move students into the correct level at the end of the year.

Year-Long World Language Electives (Spanish & French)



[Click here for Video](#)

Course Information: **WORLD LANGUAGE**

- ▶ All world language classes (except Introduction to Spanish and Introduction to French) are high school credit classes! **This means that the grade you earn in your world language class at Poe Middle School will go on your high school transcript.**
- ▶ All grades on your high school transcript go toward your Grade Point Average (GPA), so your grade in middle school Spanish or French class will affect your high school GPA!

Course Information: **WORLD LANGUAGE**

▶ **6th graders** who are interested in taking a world language in middle school have the option to take the level 1 class all in one year in 8th grade or take level 1 over 2 years (1st half of level 1 in 7th grade and 2nd half of level 1 in 8th grade).

▶ **Example:** You can take either of the following:

- Spanish 1 in 8th grade **OR**
- Spanish 1 Part A in 7th grade and Spanish 1 Part B in 8th grade.

▶ These options exist for all languages at Poe (Spanish 1, French 1, and Spanish for Fluent Speakers 1) and both options will earn a HS credit

Course Information: **WORLD LANGUAGE**

▶ **7th graders** who are interested in taking a world language next year for the first time must select level 1 of the language you are interested in

▶ **Example:** If you are interested in taking French for the first time next year, you must select French 1 on the course selection Google form. Only current 7th graders who are taking French 1 Part A this year are able to select French 1 Part B on their course selection Google form.

2. Orchestra (Year Long) 923710
3. Chorus (Year Long) 926010
4. French 1 (Year Long) 511000 
5. French 1 Part B (Year Long) 511500
6. Spanish 1 (Year Long) 551000

Half-Year/Semester CTE Electives (FACS, STEM & Computer Technology)

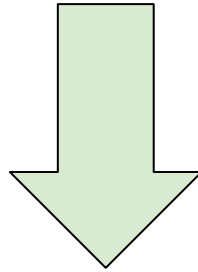


[Click here for Video](#)

Course Information: FACS

You must take FACS classes in the following order:

Family & Consumer Sciences 1

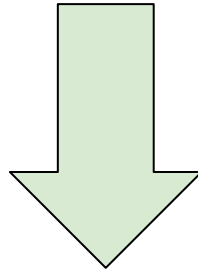


Family & Consumer Sciences 2

Course Information: **STEAM**

You must take STEAM classes in the following order:

Engineering Design and Model - Level 1

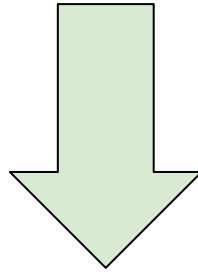


Engineering Simulation & Fabrication - Level 2

Course Information: **TECHNOLOGY**

You must take TECHNOLOGY classes in the following order:

Computer Solutions



Coding & Innovative Technology

Half-Year/Semester Fine Arts Electives (Theater & Art)

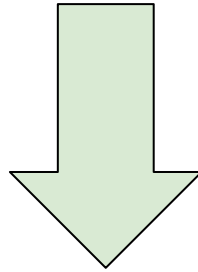


[Click here for Video](#)

Course Information: **THEATER**

You must take THEATER classes in the following order:

Theater Arts Appreciation



Advanced Theater Arts Appreciation

Course Information: ART

You must take ART classes in the following order:

Art Foundations



```
graph TD; A[Art Foundations] --> B[3D Art Exploration]; A --> C[Computers in Art]
```

3D Art Exploration

Computers in Art

Next Steps

Academic Advising & Course Selection Process

Step 1:

Academic Advising Lesson Part 1
(February 5)



Learn about the academic advising process, timeline for course selection this year, and core and elective course options.

Step 2:

Complete independently
(February 6-8)

Explore the online course catalog to pick the courses you want to take next year. Discuss your choices with your parent/guardian.

Step 3:

Academic Advising Lesson Part 2
(February 8-12)

Complete your course selection Google form and enter your course requests in SIS StudentVUE.

Step 4:

Complete independently
(February 13-March 5)

Email or show your parent/guardian the copy of your course selection Google form responses. All changes due to your counselor by March 5th.

Course Selection Resources on Poe MS Website

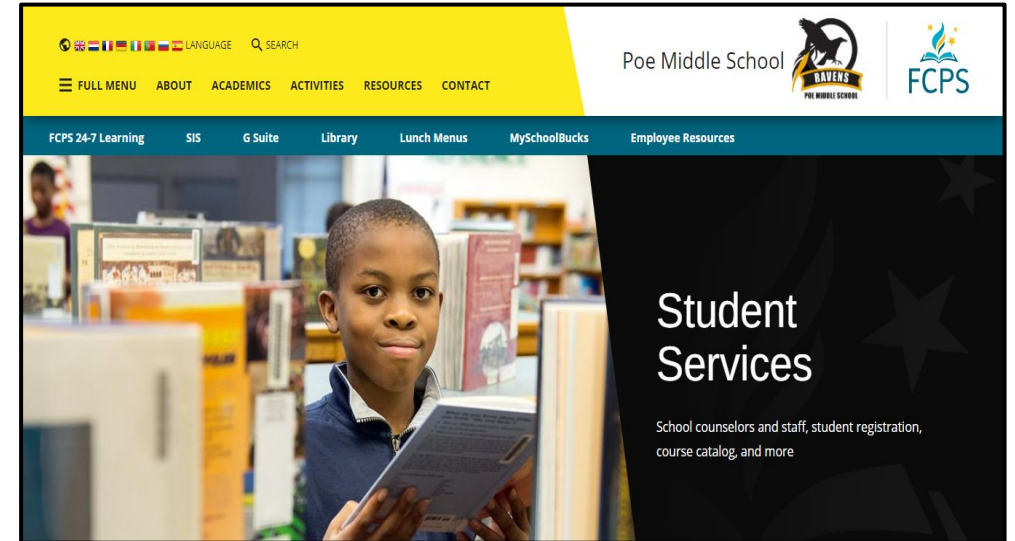
How to access to course selection resources:

→ Go to www.poems.fcps.edu

→ Click on “FULL MENU” on the top left of the screen

→ Click on the arrow next to “Student Services”

→ Click on “Course Selection & Academic Advising”



Counselor Contact Information

Role	Name	Contact Information (email/phone)
6 th Grade School Counselor	Ms. Carrie	703-813-3839 / brcarrie@fcps.edu
7 th Grade School Counselor	Ms. Kim	703-813-3865 / hkim1@fcps.edu
8 th Grade School Counselor	Mrs. Mourning	703-813-3825 / ndmourning@fcps.edu
School Counselor (All Grades)	Mrs. Turner	703-813-3824 / kwtturner1@fcps.edu