



Fairfax County
PUBLIC SCHOOLS
ENGAGE • INSPIRE • THRIVE

Poe Middle School Town Hall

Federal Identification

Today We Will...

1. Share our school data and how this has informed our work throughout the year.
2. Review the new *Virginia Support Framework* and supports as a Federally Identified school.
3. Share updates and answer questions.

School Updates and Celebrations



Federal Identification

Any Level 3 (Red) school quality indicator for accreditation opens to the possibility of federal identification.



2023 Accreditation Indicators

Academic Achievement - English	Level One	Achievement Gap - English	Level One	Chronic Absenteeism	Level Three
Academic Achievement - Math	Level One	Achievement Gap - Math	Level Two		
Academic Achievement - Science	Level Two				

Federal Identification Data

- 247 total schools are currently identified in Virginia
 - 52 Comprehensive Support & Improvement (CSI)
 - 51 Additional Targeted Support & Improvement (ATSI)
 - 144 Targeted Support and Improvement (TSI)
- 56% of those (138 schools) are newly identified in 2023-24

Poe MS - Standards of Accreditation Summary

2023 Accreditation Indicators					
Academic Achievement - English	Level One	Achievement Gap - English	Level One	Chronic Absenteeism	Level Three
Academic Achievement - Math	Level One	Achievement Gap - Math	Level Two		
Academic Achievement - Science	Level Two				

2019 - Year 1 of Waiver

2022 - Year 2 of Waiver

2023 - Year 3 of Waiver

Accredited

Accredited

Accredited

Triennial Waiver Status:

will ***not be renewed*** due to Level 3 indicators in 2023

Stagnation Rule Risk:

Students with Disabilities in English and Math will turn Level 3 (4 years) unless their combined rate meets the Level 1 benchmark this Spring.

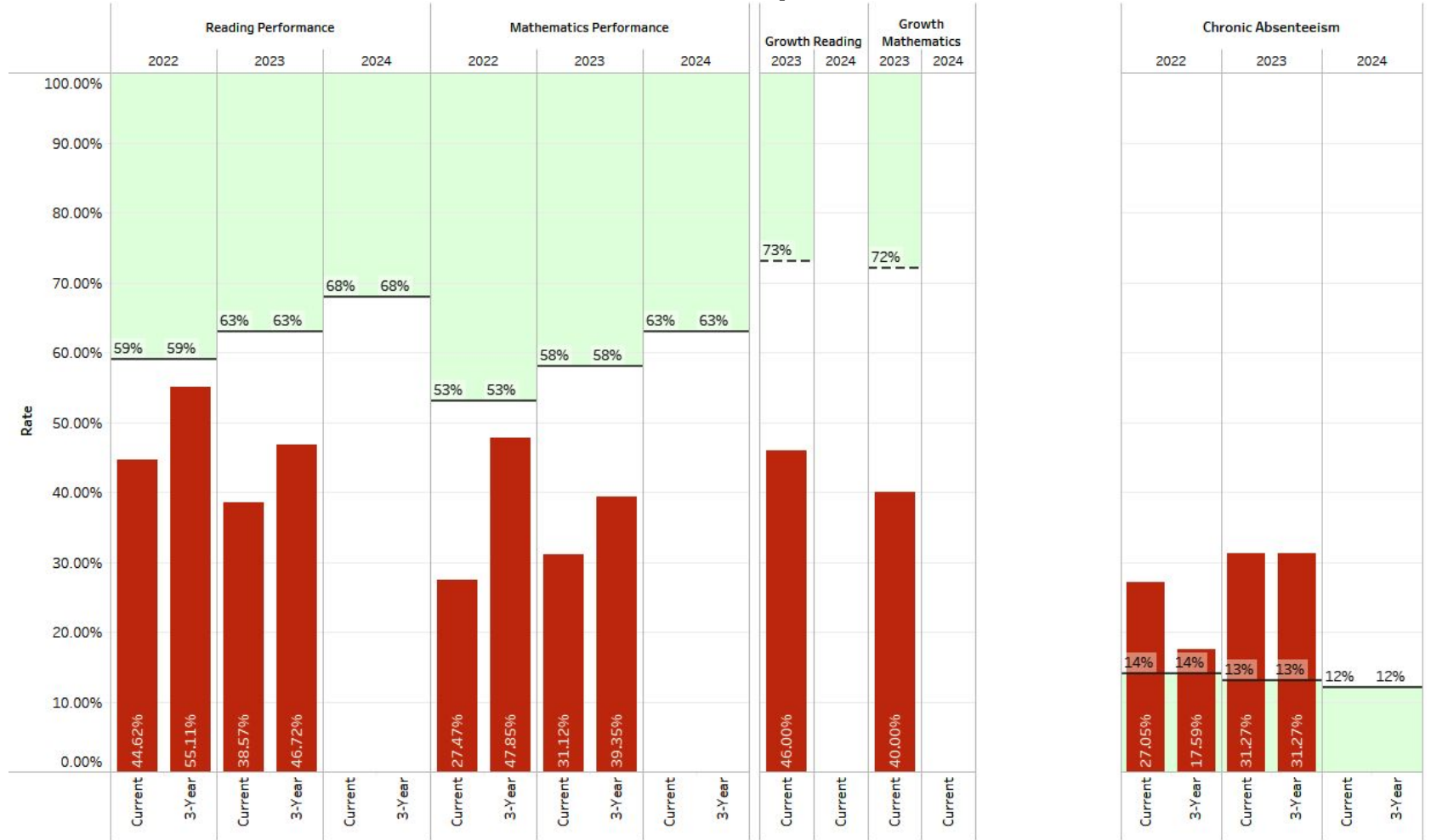
This will NOT automatically cause an overall indicator to become Level 3.

Poe MS - Standards of Accreditation Summary

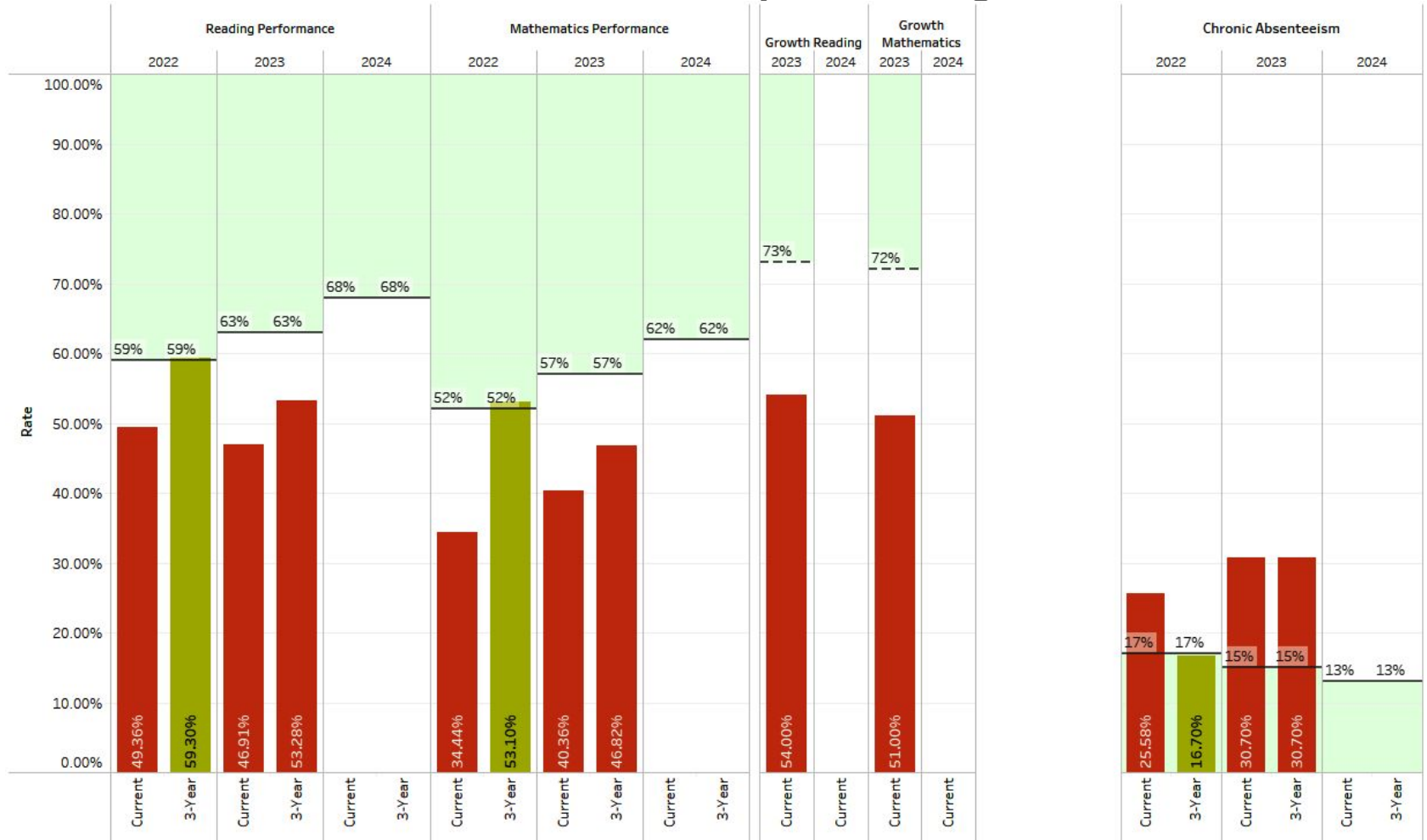
- Cumulative 3 Year
- Current Year



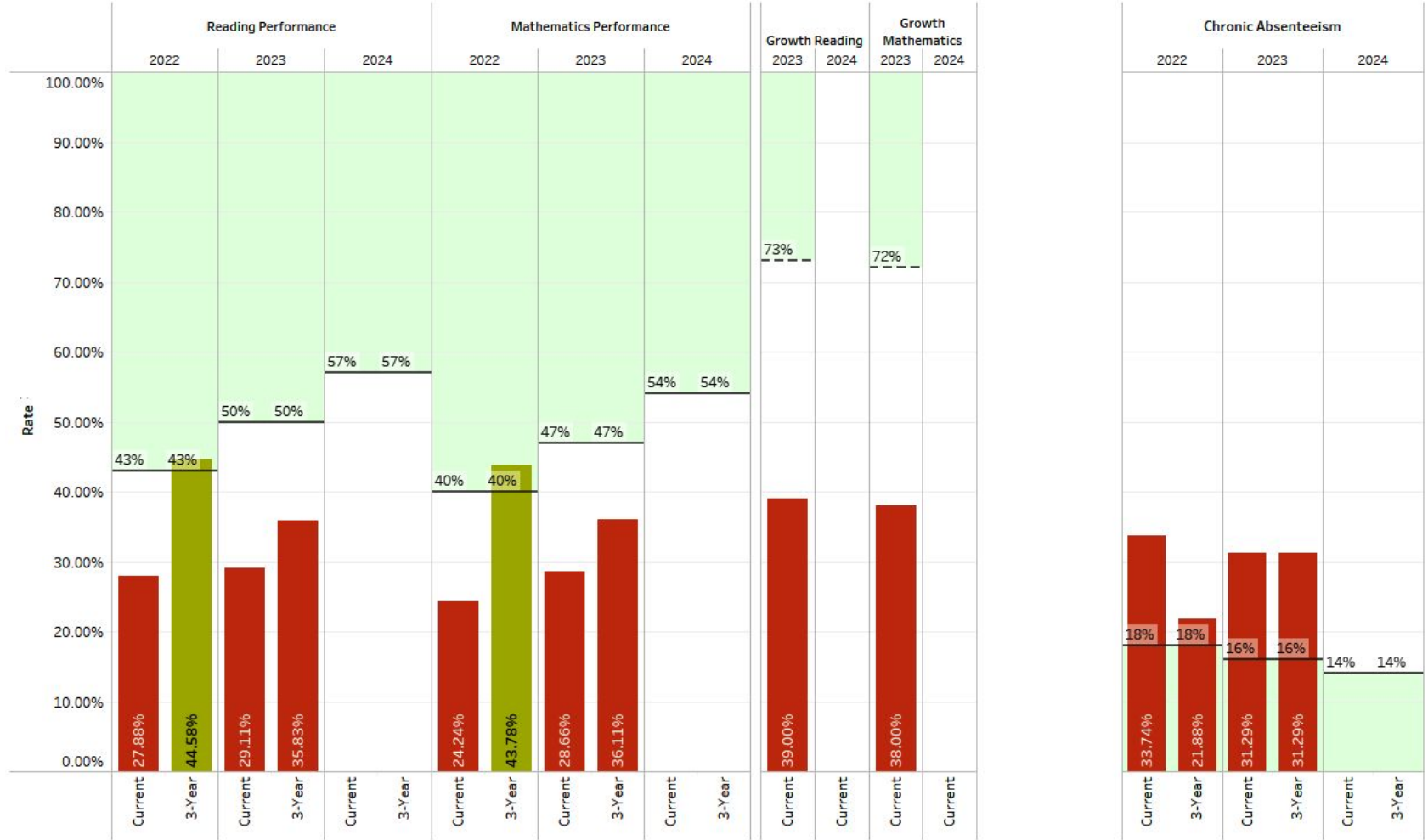
Poe MS - Hispanic



Poe MS - Economically Disadvantaged



Poe MS - Students with Disabilities



To Exit TSI:

- TSI identifications are for one (1) school year only
- All student groups exit TSI at the end of the school year

Next Year:

- All schools start with a clean slate
 - No school is automatically TSI due to prior year(s)
 - No group is automatically identified due to prior year(s)
- Only schools with Level 3 SOA indicators will be reviewed for TSI

Poe MS - ESSA Summary

TSI Group Indicator Risk for 2024:

Group	Risk	Notes
Asian	medium	2023 below all targets but high growth*
Black	low	2023 reading 3-year above target
Hispanic	identified	2023 below all targets
Multiple Races	too small	TS excludes group from possible identification

Group	Risk	Notes
White	medium	2023 below all targets but high growth*
Econ Dis	high	2023 below all targets
ELs	high	2023 below all targets
SWD	high	2023 below all targets

**growth 50th percentile cutoffs change yearly based on statewide results*

Partnering in this Work

- Attendance
- Family/Community Partnership
- After School Opportunities
- Preparation for SOLs

Questions?





THANK YOU!